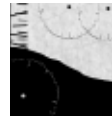


PORTFOLIO

landscape architecture



Gamze Alpan

**selected
works**
2023

Hello,

I am Gamze!

Nature and natural beauty have always been my passion. In every house I have lived in, I made sure to have a particular corner for plants and flowers, a place where nature could thrive inside my home. However, I grew up in Istanbul, a city that lacks green spaces and contact with nature. This stark contrast inspired me to pursue a career in Landscape Architecture, which I have been practising for the past ten years.

I moved to the Netherlands four years ago. I fell in love with Dutch society's connection with the land and how every millimeter of soil has been used to its full extent. After working as a freelance landscape architect here, I realized how much thought has been put into structuring and organizing urban life, nature, and a sustainable economy.

CONTENTS

01

Page 4-13

STARTUP HEAVENSTRAAT
Amsterdam, The Netherlands

02

Page 14-21

**ULSAN TAEHWAGANG NATIONAL
'Naturalistic Garden'**
South Korea, Ulsan

03

Page 22-31

**MARDIN
URBAN PARK**
Turkey, Mardin

04

Page 32-41

**OVERAMSTEL:
Maximizing the value**
Amsterdam, The Netherlands

05

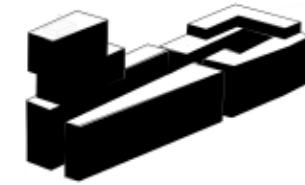
Page 42-53

MESA ORMAN
Turkey, Istanbul

06

Page 54-59

Private Gardens
Amsterdam, The Netherlands



01 E STARTUP H AVENSTRAAT

Havenstraat area: from forgotten inner urban fringe to diverse dynamic district

This area has been reused and transformed into an innovation centre that will host start-ups and companies.

The project has to deal with a complex pre-existence in this area: The 'old south' is one of Amsterdam's most posh districts. The case study area is everything but posh: it consists of a mismatch of run-down warehouses, a tram depot, some shady workshops, a 'lost' housing block, garages, etc.

Year: 2022

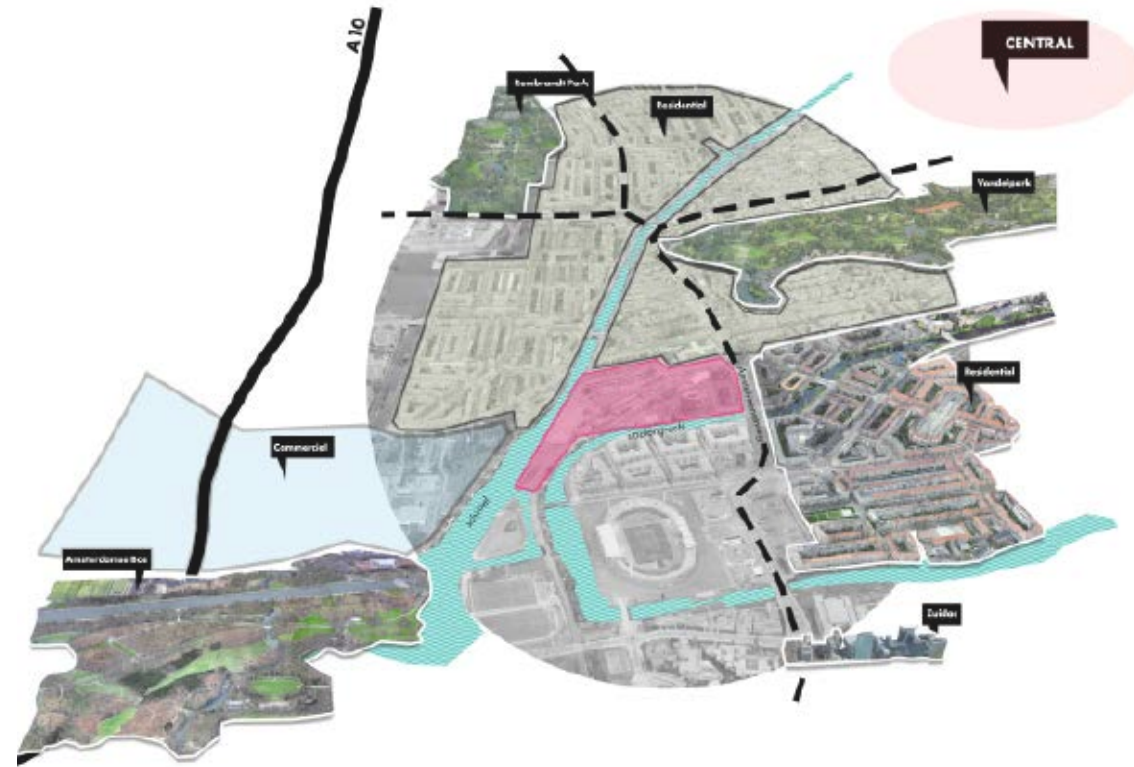
Location: Amsterdam, The Netherlands

Type: Urban Design

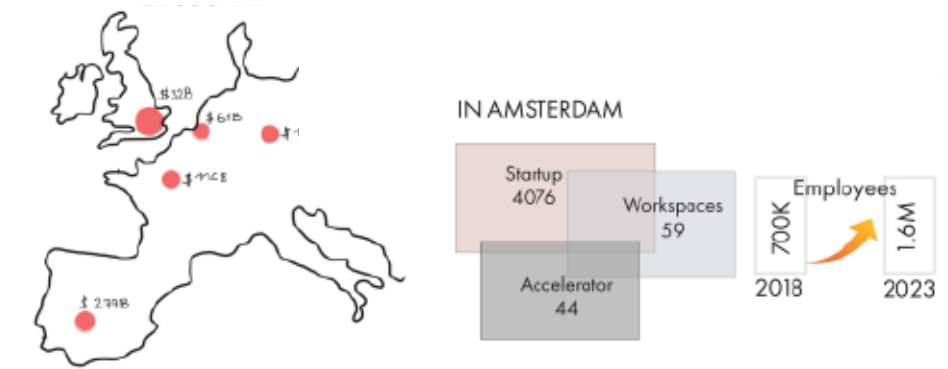
Instructor: Academie van Bouwkunst, David de Kool

Role: Individual work

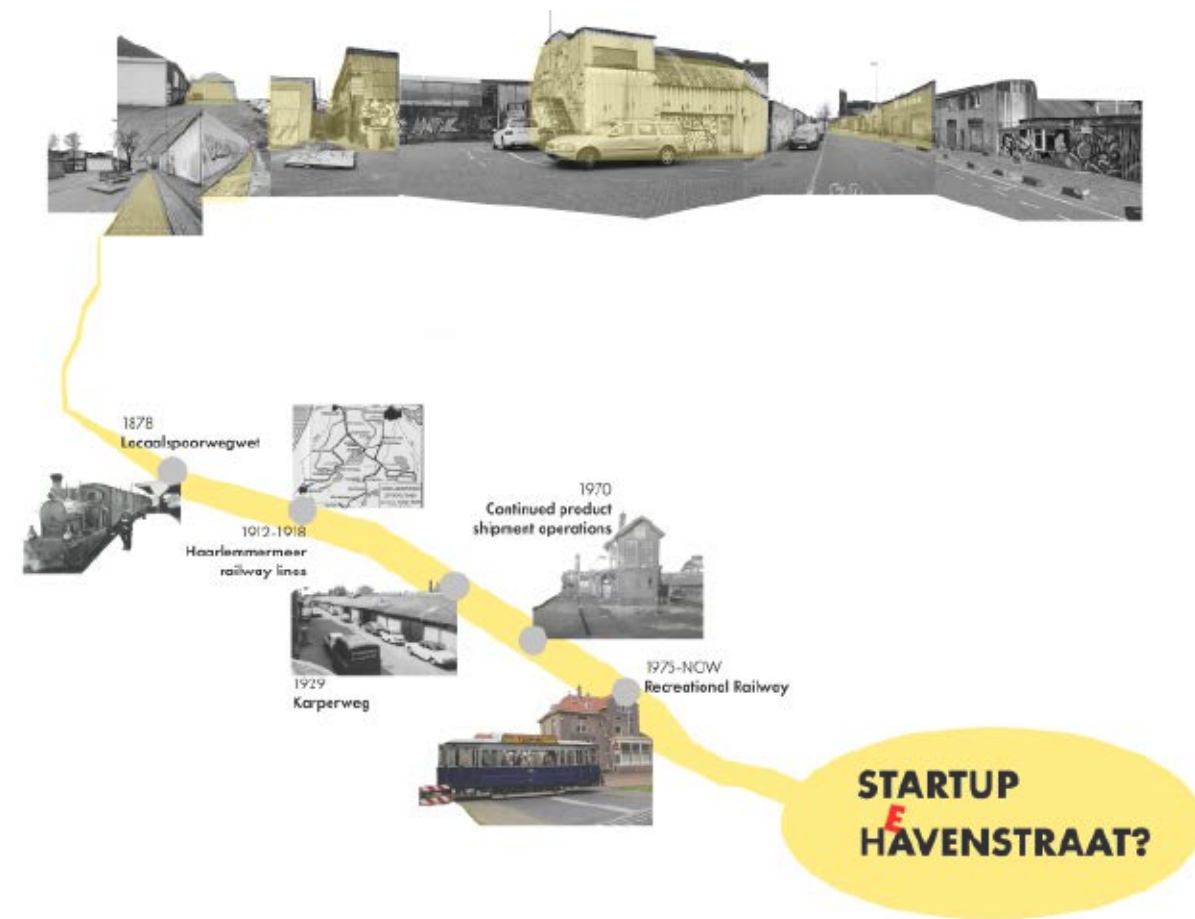
LOCATION



Amsterdam is widely recognized as the hub for up-and-coming technology startups in Europe. I am convinced that creating a dedicated space, such as *a startup incubator*, to foster and empower the growth of these startups would significantly enhance the overall value of the region. This endeavour would benefit Amsterdam and make a valuable contribution to the broader landscape of the Netherlands.



Currently, Amsterdam has a community of 4000 verified startups. It is backed by 44 accelerators and 59 workspaces. Interestingly, this number has doubled in the five years highlighting the urgent requirement for more space to support the ongoing growth and progress of startup, in the area.



HISTORICAL CONCEPT

My train of thought to a Start-up

Inspirational and untouched location in the middle of Amsterdam. Its history, its usage, and its legacy lead me to a journey of a startup.

Birth, growth, and the possibility of being a unicorn*

*Unicorn companies are those that reach a valuation of \$1 billion without being listed on the stock market and are the dream of any tech startup.

In summary, my analysis highlights the critical role played by the railway station in shaping this region.

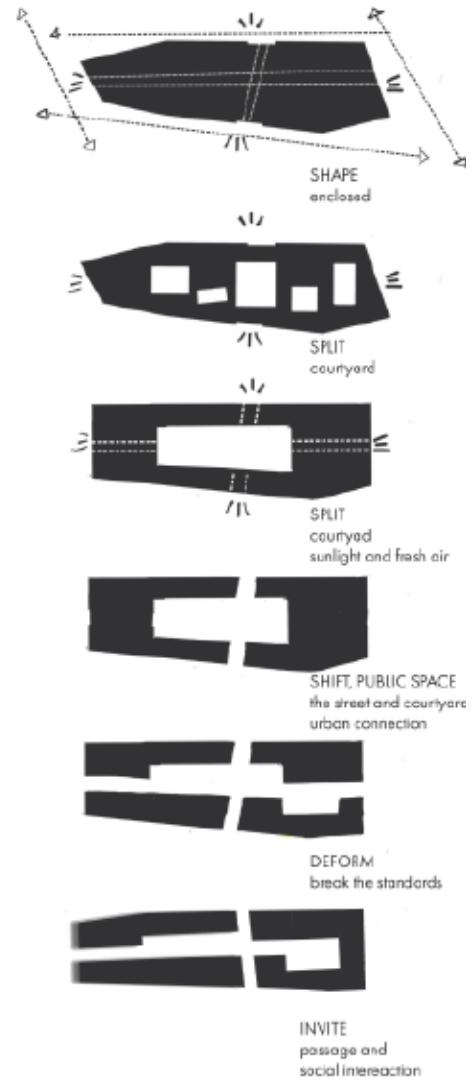
The establishment of *Lokaal spoorwegwet* significantly facilitated the development of new railway networks, resulting in a pronounced influx of businesses and startups to this location. The strategic railway connection between *Haarlemmermeer* station and Amsterdam in the south was a direct outcome of this initiative.

Primarily focused on transporting vegetables from the Sloten region to *Aalsmeer* for auction, the railway system served as a crucial logistics artery.

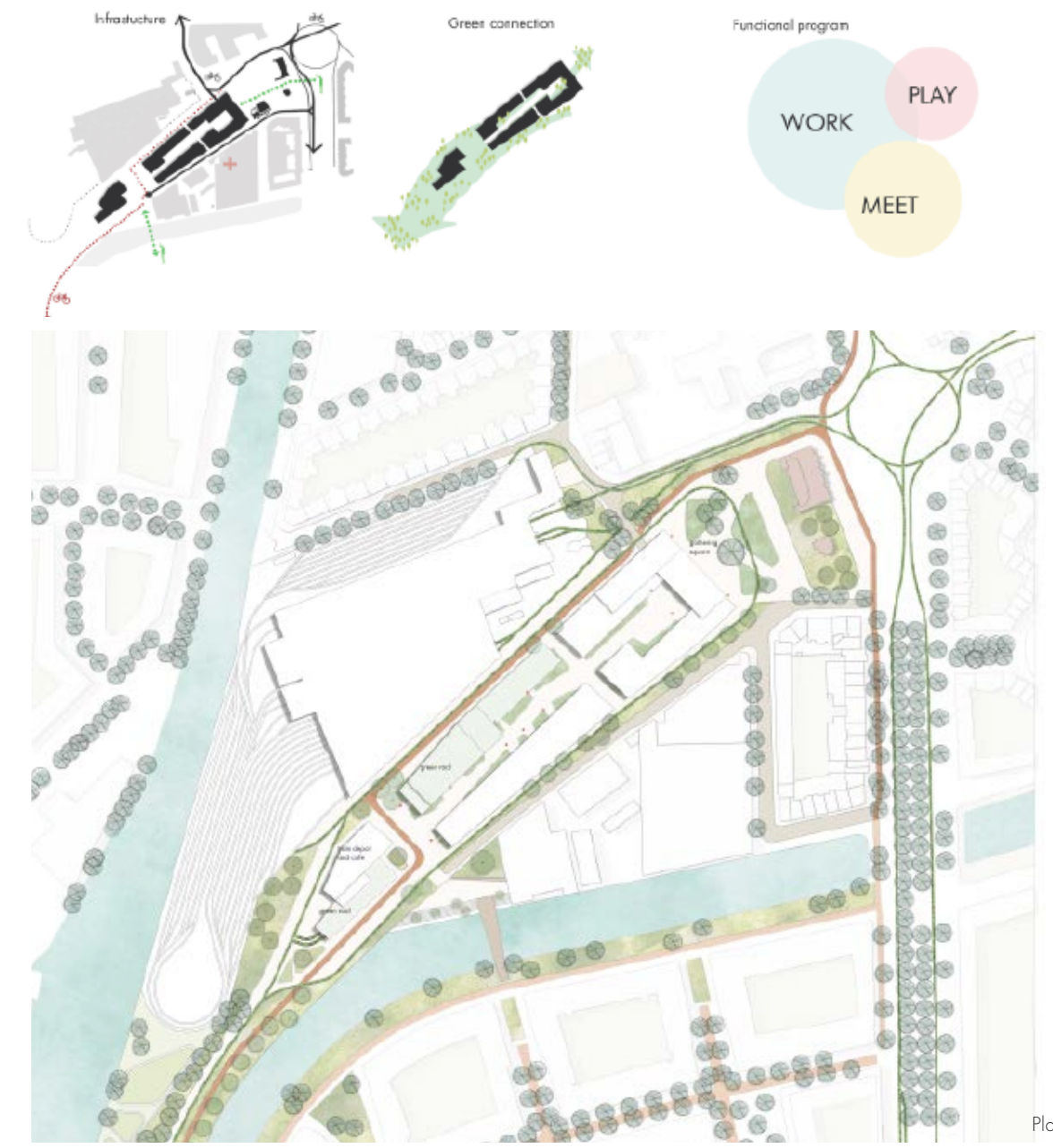
The presence of *Haarlemmer station* and its interconnected railways catalyzed the establishment of numerous enterprises within the vicinity. The demand for storage facilities surged to ensure the safety of produce, while the steady flow of passengers entering and departing from the station engendered a thriving business ecosystem.

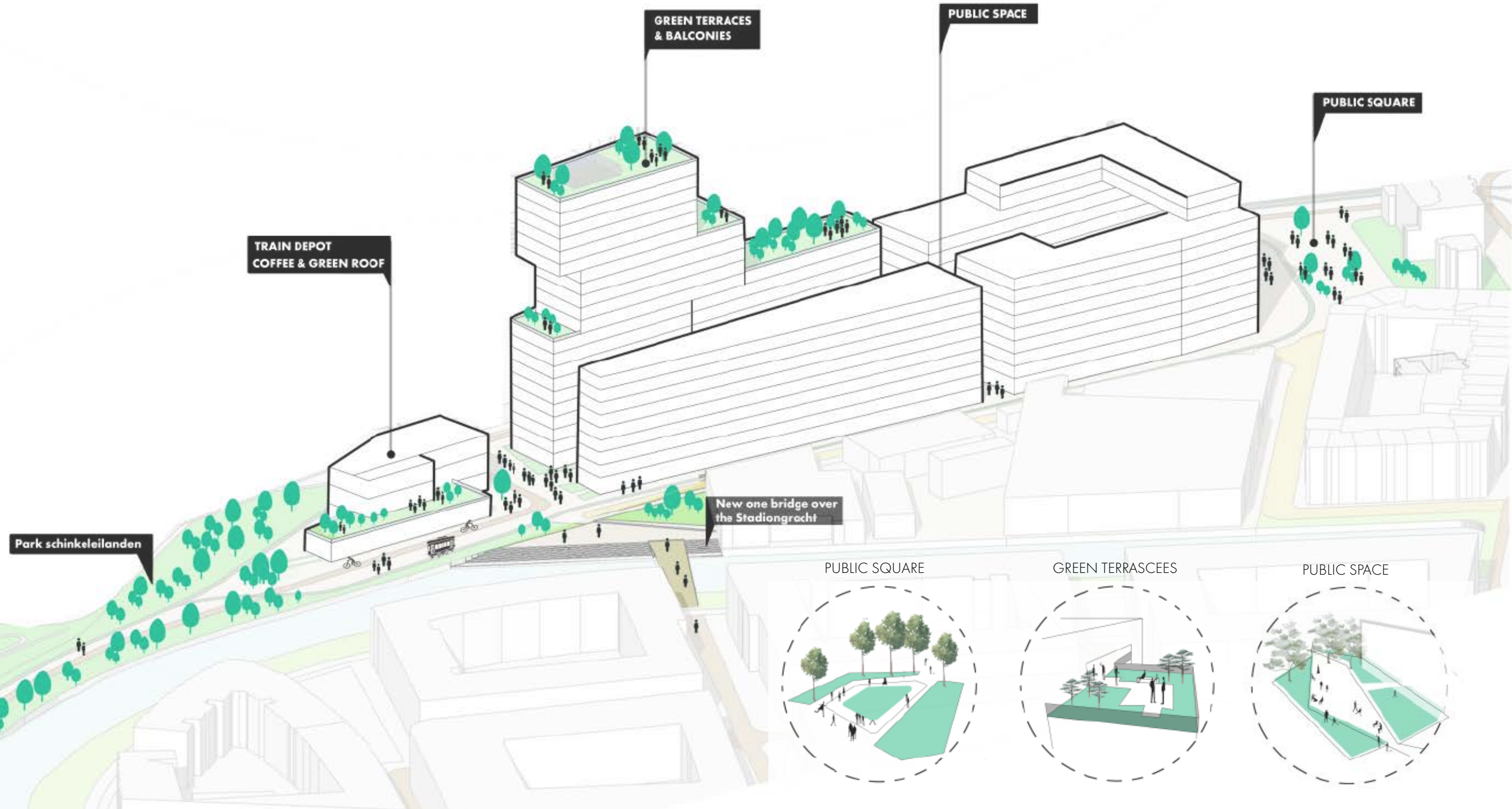
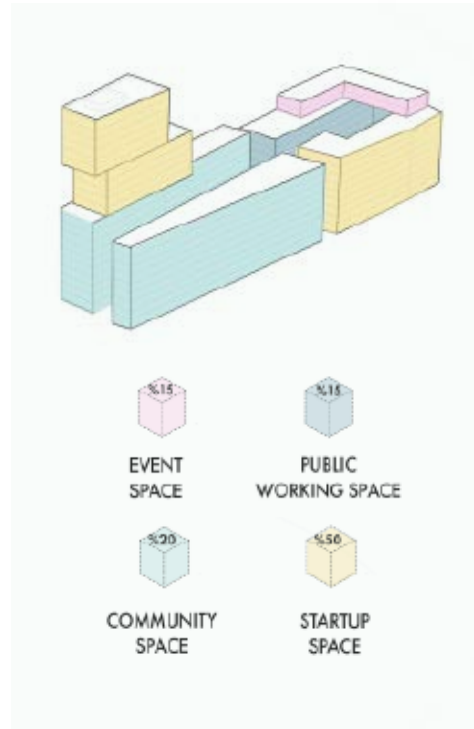
In fact that, this confluence of factors has fostered an entrepreneurial spirit characteristic of the region.

FORM DEVELOPMENT



PROPOSAL MAPS







02 ULSAN TAEHWAGANG NATIONAL 'NATURALISTIC GARDEN'

This garden is the first of its kind in Asia and is known to be the largest area in the world. It is Korea's first waterside ecological garden and comprises 84 hectares, six themes, and 29 sub-areas.

Located along the midpoint of the Taehwagang River, a previously neglected site has been revitalized into the expansive Taehwagang National Garden.

Piet Oudolf and Bart Hoes designed the garden. I created digital assets and prepared visual presentation.

Year: 2023

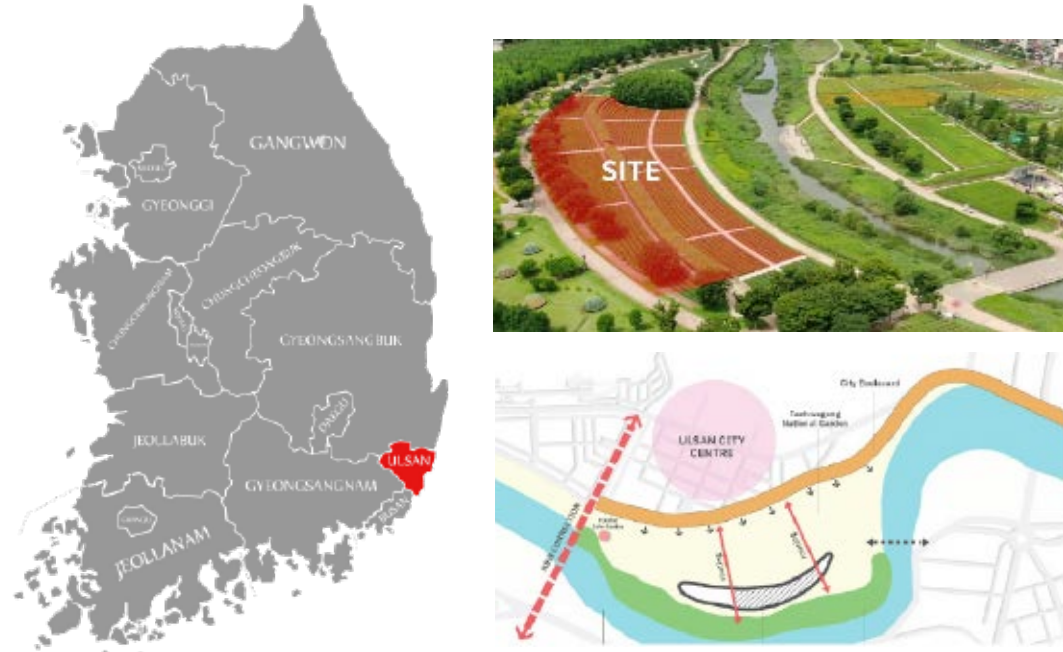
Location: Ulsan South Korea

Type: Public garden

Instructor: Piet Oudolf, Bart Hoes

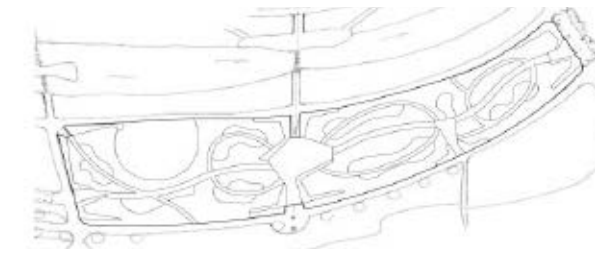
Role: Visual presentation, 3D Modeling

LOCATION

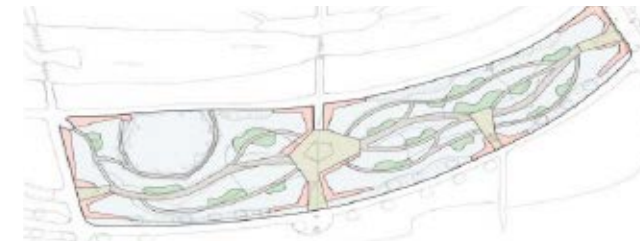


The Ulsan Garden stands as South Korea's most expansive urban park, spanning an impressive 3.69 square kilometres (1.42 square miles) of lush parkland. With over 1.5 million visitors annually, Ulsan is a prominent destination, exemplifying the allure and significance of well-designed urban green spaces within the landscape.

DESIGN EVOLUTION



Step 1

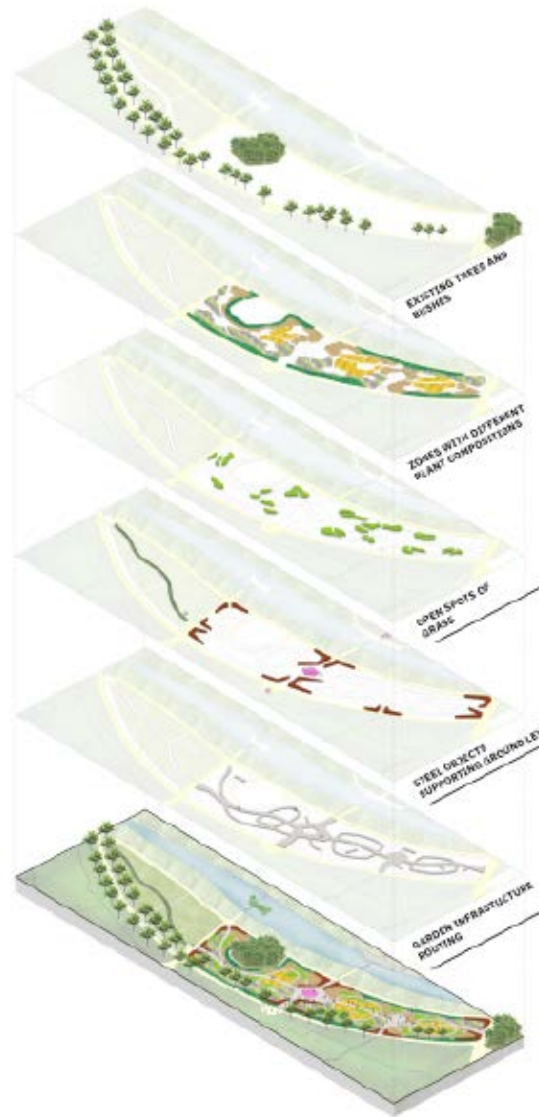


Step 2



Step 3

CONCEPT DIAGRAM



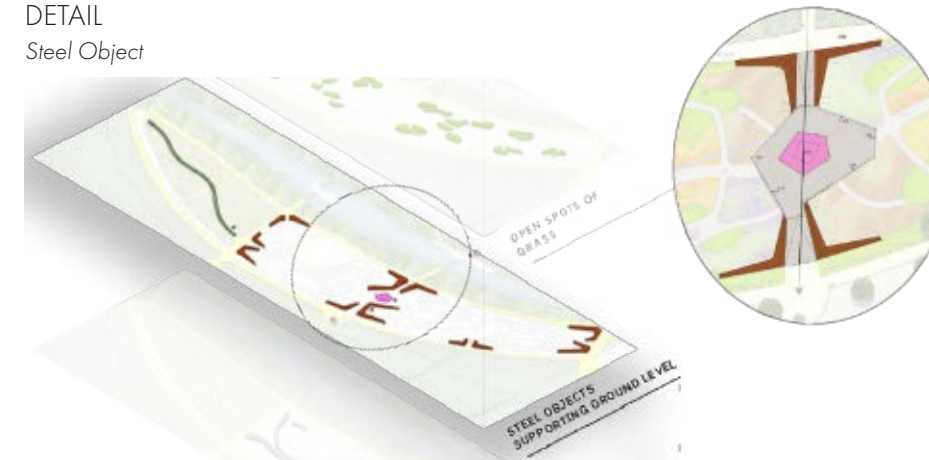
Proposed Plan



During implementation



DETAIL Steel Object



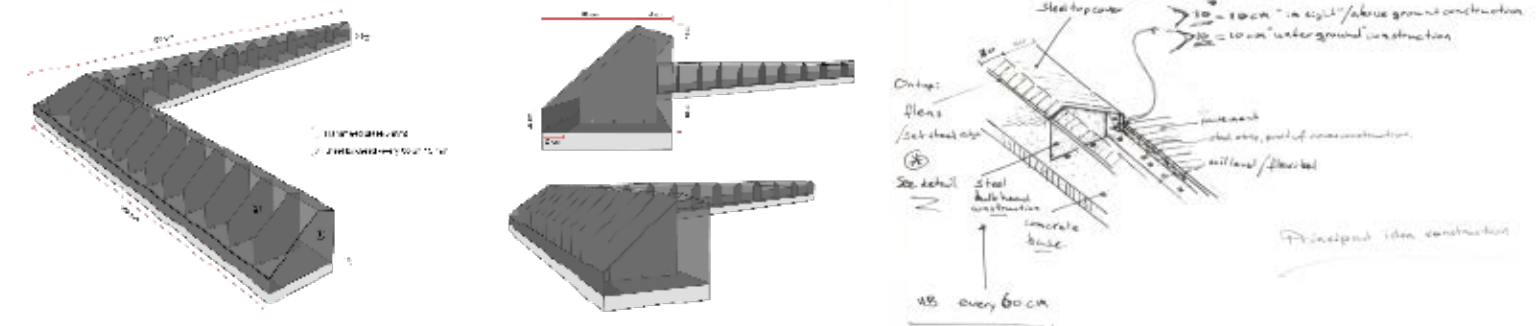
A unique pavilion, being a landmark in the center of the garden:

- Sight-tower, overlooking the beautiful plant-compositions
- Story-telling design of this garden by Piet and Bart.
- Tea-house

Steel objects:

- marking every corner and entrance of the garden
- lifting up ground level of the garden (70-80 cm)
- slow slopes in between for easy entrance of disabled visitors

Steel Object Construction







03 MARDIN URBAN PARK

Connecting Heritage, Nature, and Community

In the heart of southeastern Turkey lies Mardin, a city rich in history and cultural significance. My landscape project aims to craft a city garden that transcends time, merging the echoes of ancient trade routes with the vibrancy of modern life.

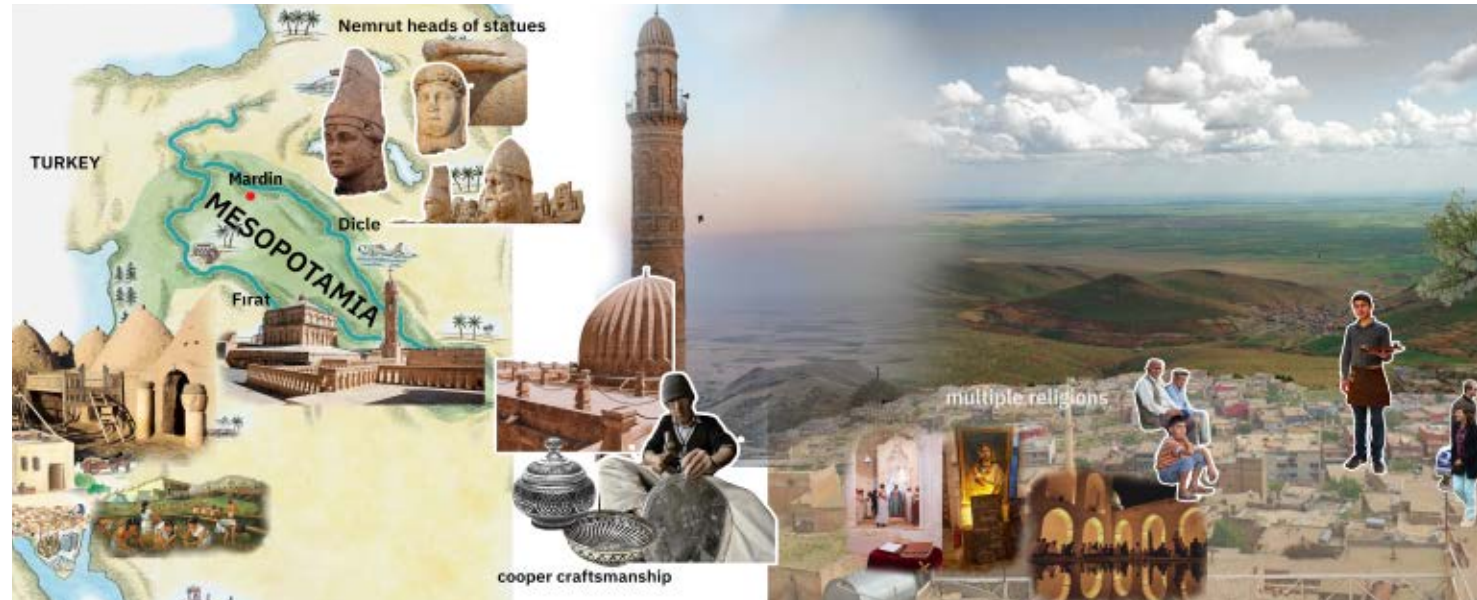
Year: 2018

Location: Mardin, Turkey

Type: Urban Design

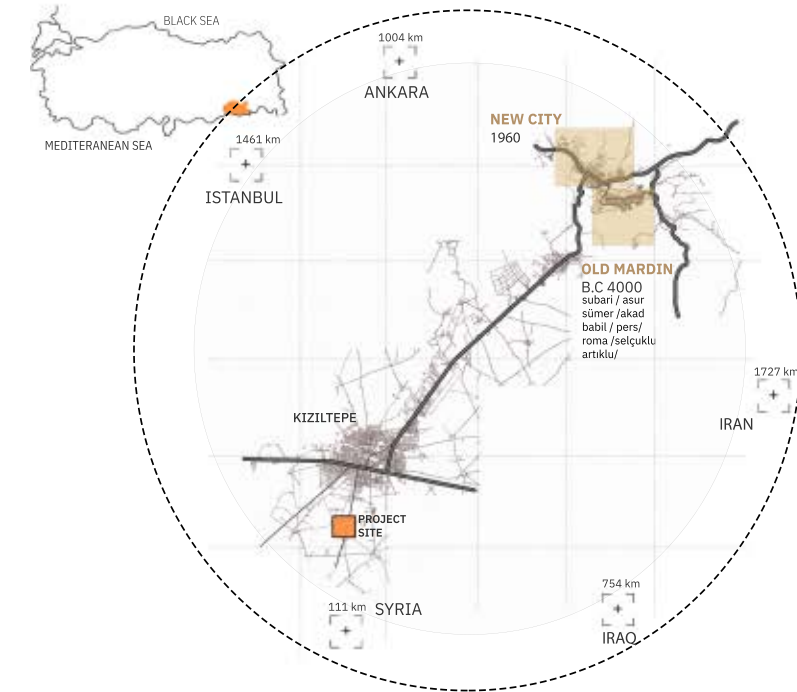
Instructor: Mardin Metropolitan Municipality

Role: Individual work



Mardin, situated in southeastern Turkey amidst the Firat and Dicle rivers, embodies the essence of Mesopotamia—an ancient cradle of civilization. Its rich historical tapestry is woven into the very fabric of the city. With a commitment to safeguarding its cultural legacy, strict regulations have been implemented in urban planning practices.

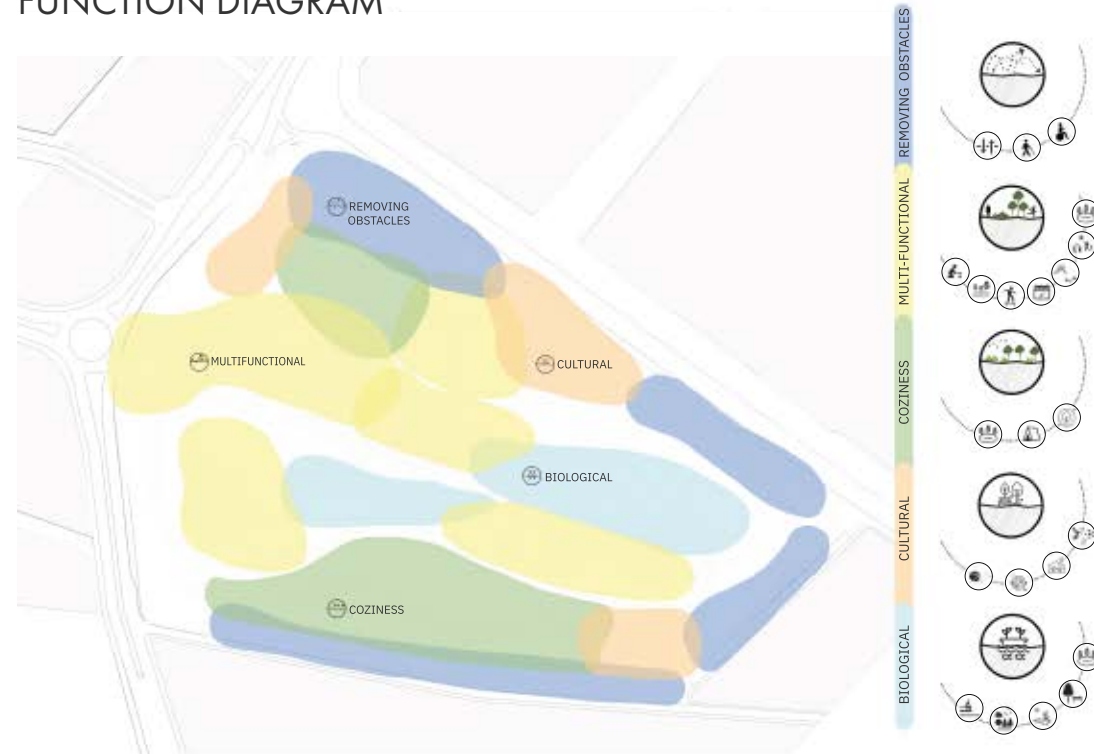
LOCATION



Mardin is at the south east of Turkey in the middle of Firat and Dicle rivers which form Mesopotamia. As it is located in one of the oldest civilization points in the world, Mardin has a deep history. To preserve the historic heritage many regulations have been enforced in city planning. Kiziltepe is chosen as one of the expansion points for Mardin to grow.

Kiziltepe lies in the south of Mardin close to Turkish border with Syria. It is also a historically important location but after World War 1 and Turkish Independence War, it was mostly in ruins.

FUNCTION DIAGRAM



Accessibility Enhancement, The design prioritizes the removal of barriers, ensuring unimpeded movement throughout the park to promote inclusivity, mainly catering to the needs of individuals with disabilities.

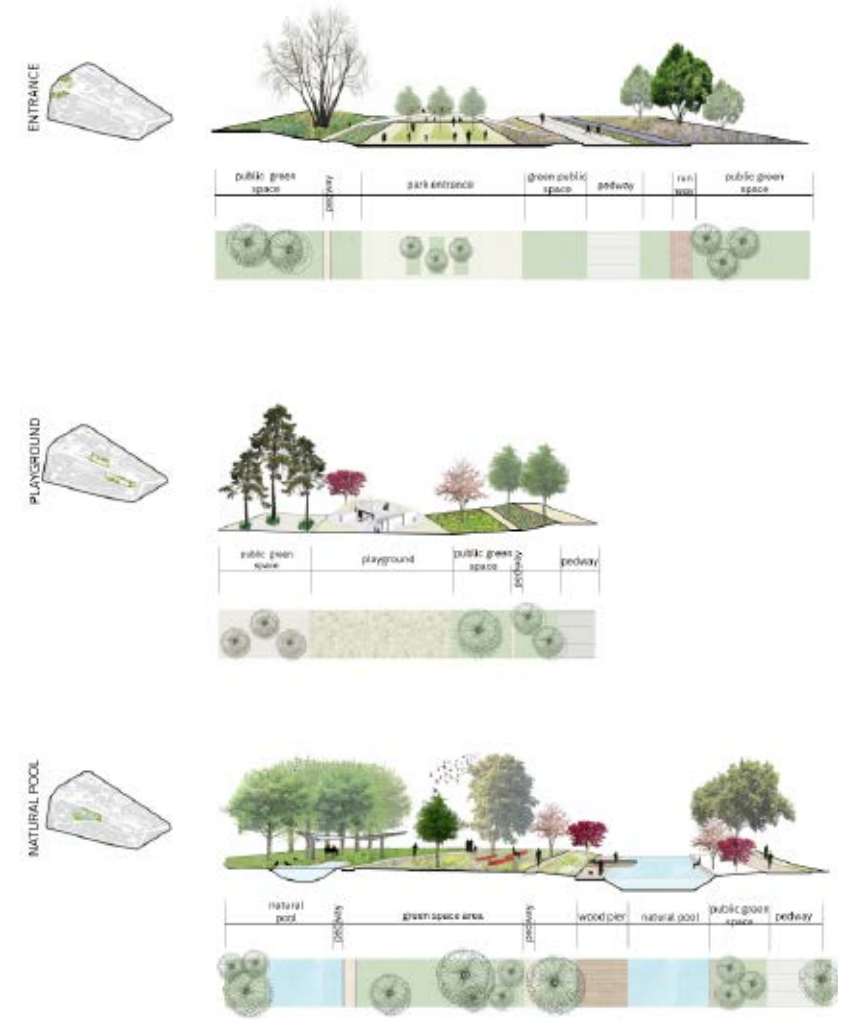
Multi-functionality, envisioning a versatile landscape, my architectural framework aims to curate an environment that seamlessly accommodates a spectrum of activities, fostering spaces for sports, artistic expression, and communal interaction.

Coziness, emphasizing a concept of cosiness, my architectural vision aspires to cultivate a tranquil setting that invites visitors to relax, enhancing their overall enjoyment of life within the park's spatial experience.

Cultural, by embracing the profound historical heritage ingrained in the area, my architectural design endeavours to craft purposeful spaces that pay homage to the past and contribute to the locale's artistic evolution and communal identity.



AXONOMETRIC PLAN

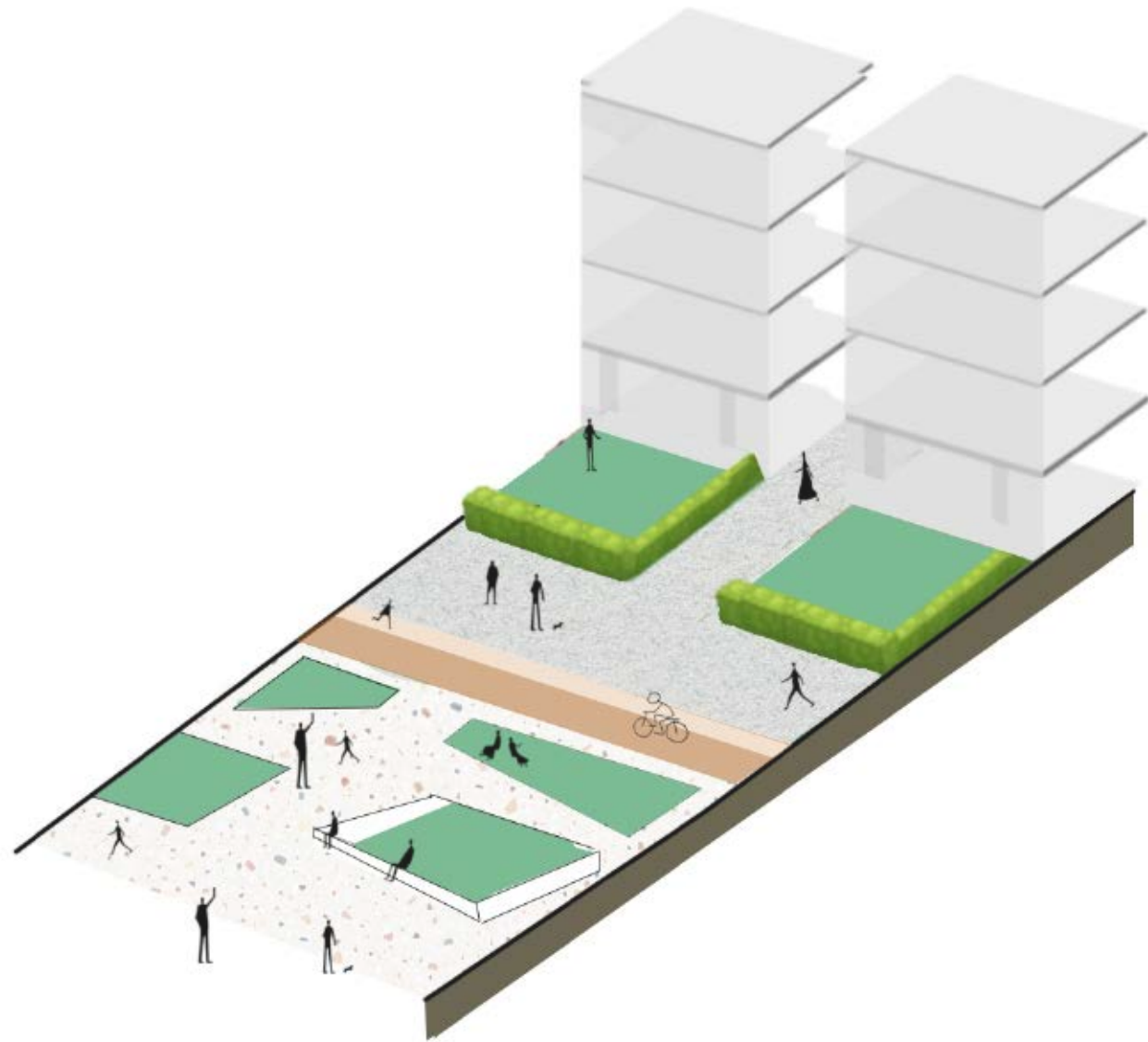


My objective was to craft purposeful environments that facilitate both leisure and personal development. These functional diagrams are conceived to serve both collective and individual purposes, accommodating planned activities as well as spontaneous engagements within the architectural framework.

OUTDOOR RESTING AREA

The outdoor leisure zone adjacent to the community centre is an important landscape feature, facilitating social congregation. Its multifunctional design enables diverse activities.





Interaction between building and environment



04 OVERAMSTEL: Maximizing the value

The Overamstel project in Amsterdam is a significant urban redevelopment initiative aimed at transforming an industrial area into a vibrant mixed-use neighborhood.

The project aims to revitalize the area by creating a more livable and sustainable urban environment. This involves repurposing former industrial sites, integrating green spaces, improving transportation infrastructure, and fostering a sense of community. Key objectives include enhancing accessibility, promoting economic growth, and preserving the area's historical heritage while accommodating modern needs.

The Overamstel project represents a forward-thinking approach to urban planning and development, aiming to create a dynamic and inclusive neighborhood that meets the needs of both current and future generations of residents and visitors in Amsterdam.

Year: 2023

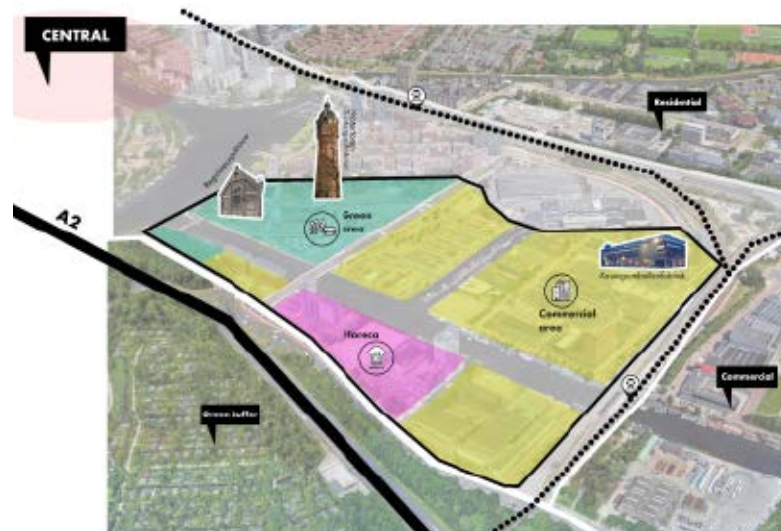
Location: Amsterdam, The Netherlands

Type: Urban Design & Landscape Architecture

Instructor: Academie van Bouwkunst, Mirjam Koevoet

Role: Individual work

LOCATION



This area is strategically positioned within the ring road, serving as a central nexus connecting Amsterdam's three key metropolitan centers: the city center, the Zuidas, and the Southeast Center Area. Its proximity to both the urban core and the verdant peripheries of the Amstelscheg creates a unique blend, offering close access to the city while maintaining a connection to the surrounding green spaces. Furthermore, it serves as a pivotal transition point bridging the urban landscape with the Amstel business park.

How come a space surrounded by allotments, active business parks, residential areas, and close to the city center can be so boring?

ANALYSIS

CONNECTION WITH SURROUNDING



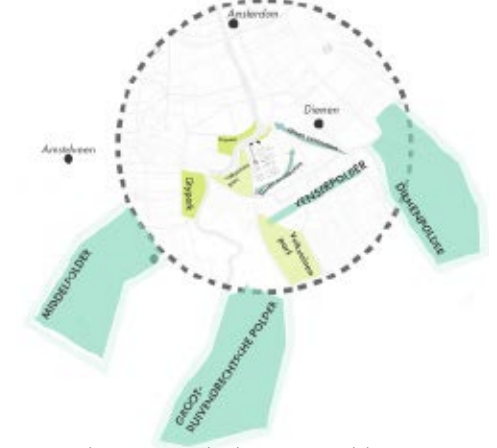
The area has a good connection with its surroundings and the rest of the country. A2 and A10 highways and metro lines are close by. Two metro stations (Overamstel and Spaklerweg) are in the area.

WATER



The location is close to the Amstel River, and it is connected by the Duivendrechtvaart canal. This canal is not actively used, and it has a small dock for commercial usage.

GREEN ZONE



There are multiple green polders, parks, and allotments close to this location. There is also a newly designed park (Park Sommerlust) within.

ACCORDING TO MY ANALYSIS;

Surrounded by residential

Single-use zoning

Under-utilized commercial area

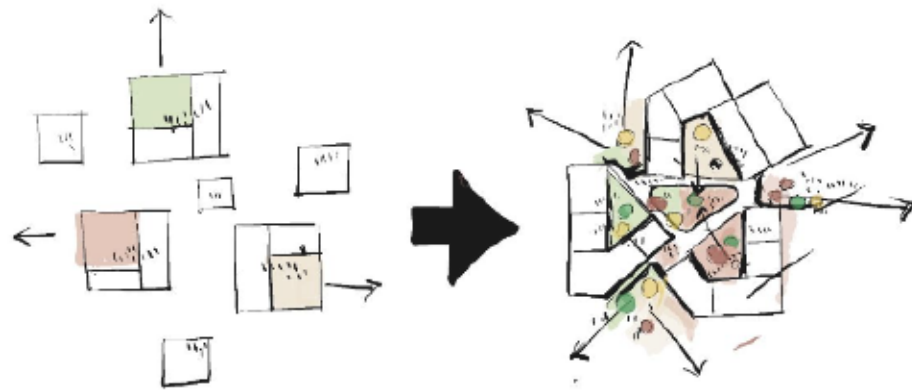
An adequate transportation

I believe that this area is used below its potential, which makes it a good candidate for urban redevelopment.

DESIGN GOALS

Key concept directions

- Creating a better life
- Expanding green spaces
- Forming a strong community
- Financial value
- Improving connectivity and transport infrastructure



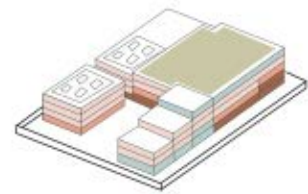
Mixed-use zoning can be a strategy to breathe new life into the neighbourhood by attracting a mix of residents, businesses, and activities; it can stimulate economic development and bring about physical improvements.



Plan 1:1000

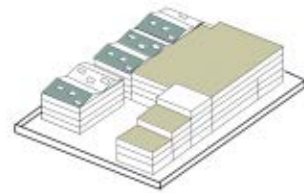


Mixed-Use



The mixed-function community satisfies people's daily needs, and the shops on the first floor provide a safe experience both during the day and at night.

Building Typology

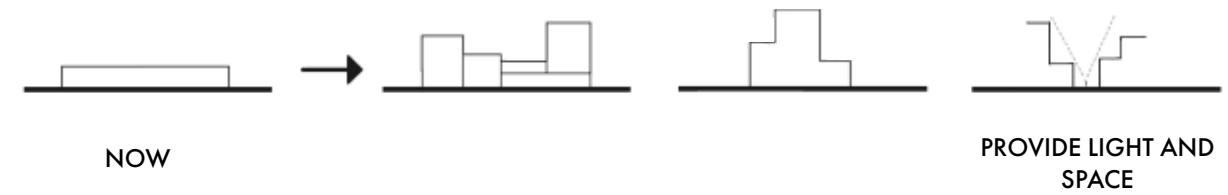


Using a stepped building to create a green roof so that the structure can be integrated into the natural environment, and the solar roof improves energy efficiency.

Public spaces



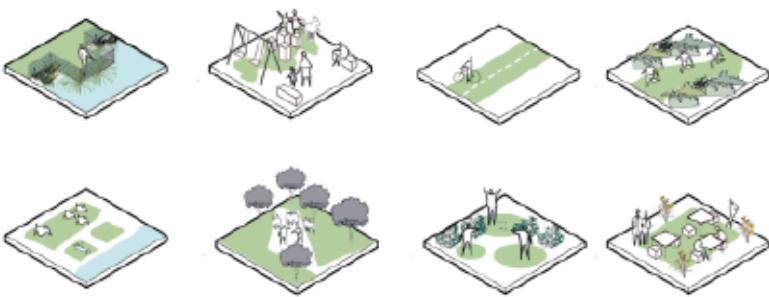
Green spaces within 1-minute walking distance meet people's health and social needs.



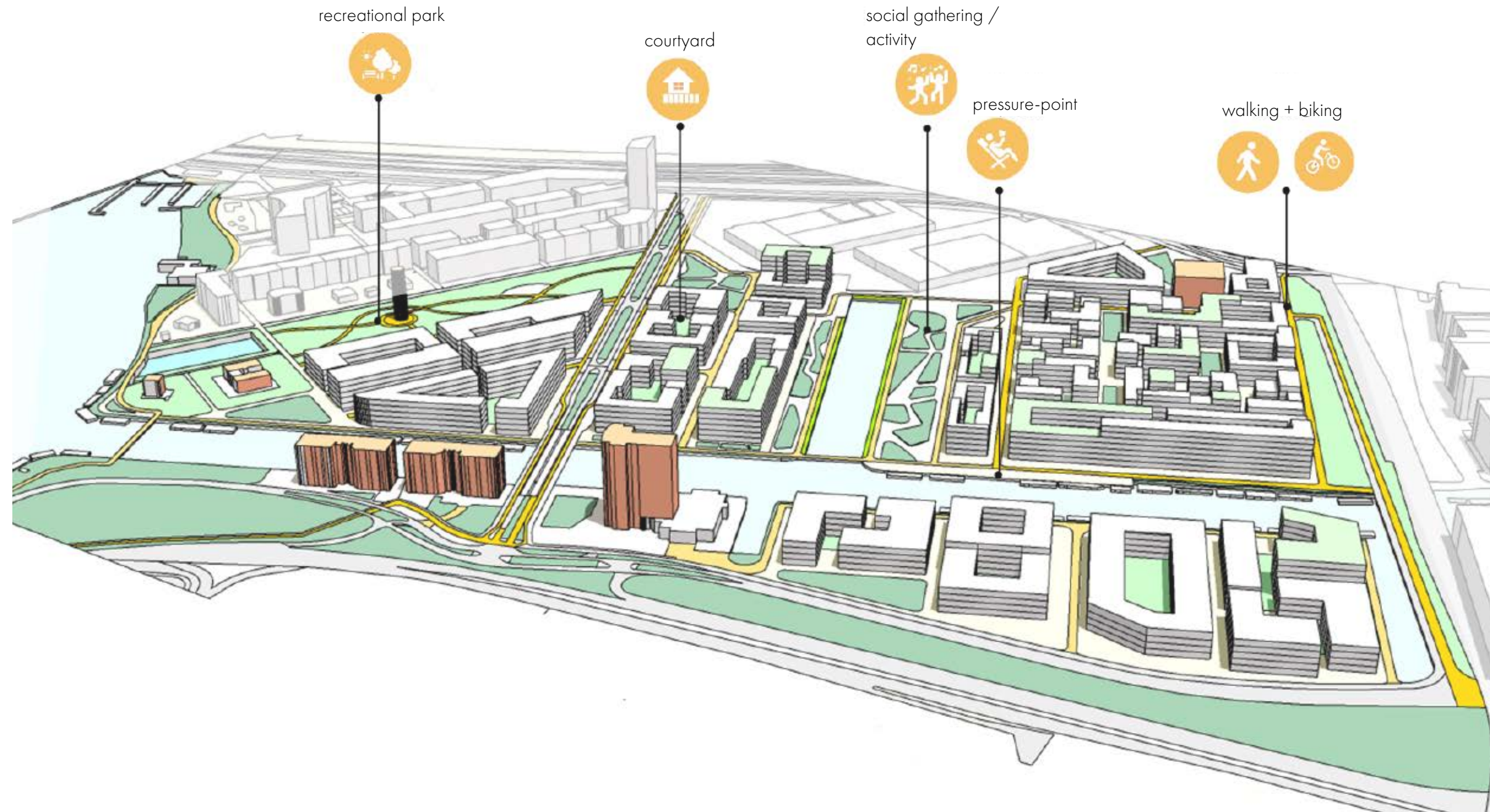
Integrating courtyards into the architectural plan increases the perception of spaciousness and supports increased natural light diffusion. As a result, these interior courtyards play an essential role in creating an airy and well-lit atmosphere.

As a result, the area has witnessed a significant increase in density in line with Amsterdam's Floor Area Ratio (FAR) standards set at 2.4. These adaptations epitomize the harmonious balance between urban density and local architectural rules.

URBAN STRUCTURE



Embracing mixed-use zoning stands as a strategic approach to revitalizing the neighborhood, fostering a harmonious blend of residents, businesses, and diverse activities. This deliberate integration serves as a catalyst for economic growth while concurrently instigating tangible enhancements to the physical landscape.





05 MESA ORMAN

Recent architectural and landscape trends in Istanbul show a shift towards creating peaceful and harmonious settings separate from the city's bustling urban fabric. As a result, there is an increasing demand for projects that blend with Istanbul's green natural landscapes on the city's outskirts. This project aims to offer residents a serene and isolated area where they can relax away from the city's hustle and bustle while surrounded by the beautiful scenery of Istanbul.

The Community Centre is at the heart of this project, which focuses on blending communal harmony and individual expression. The design approach combines collective unity with personalized experiences by prioritizing user diversity. Families can enjoy various recreational activities in the community spaces, thoughtfully crafted to foster community and leisure among the surrounding greenery. Moreover, the Community Centre has separate zones dedicated to relaxation and productivity, creating an environment that encourages residents to fully embrace all of life's experiences.

Year: 2020

Location: Istanbul, Turkey

Type: Urban Design & Landscape Architecture

Instructor: Mesa Mesken Construction Company

Role: Collaborative work - Team leader / Main Conceptualizer

LOCATION

WHERE IS 'ORMAN'



Beykoz district is one of the calmest and highest quality housing destinations of Istanbul, next to the forests and main transportation axis of the Anatolian side of Istanbul.



1/ 5000 DIAGRAMATIC PLAN



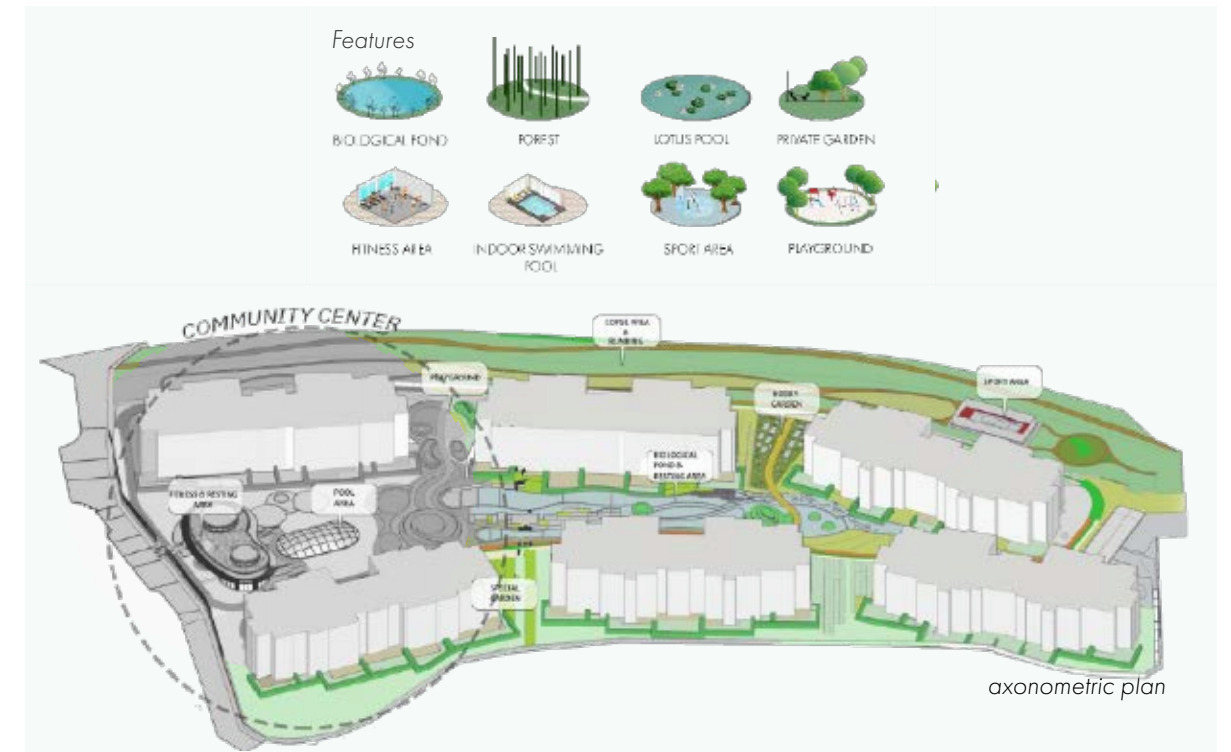
1/ 1000 PLAN

PROPOSAL

A life where your children will grow up surrounded by green,

Away from the city hustle,

Modern and sustainable life,



SPACE ARRANGEMENT



Community center

The versatile social space is designed for family leisure, community interaction, and personal well-being, providing areas for relaxation and work. It aims to maximize every individual's experience by catering to diverse needs like leisure, socializing, and productivity within the landscape.



Indoor Swimming Pool

The indoor swimming pool, boasting a glass roof, offers an immersive experience connecting swimmers with the sky above. Its design ensures a year-round availability, unaffected by outdoor temperatures, allowing patrons to enjoy a consistent environment regardless of the season.



Open spaces

You can read your book in the forest air, do yoga in the open air and relieve the tiredness of the day.

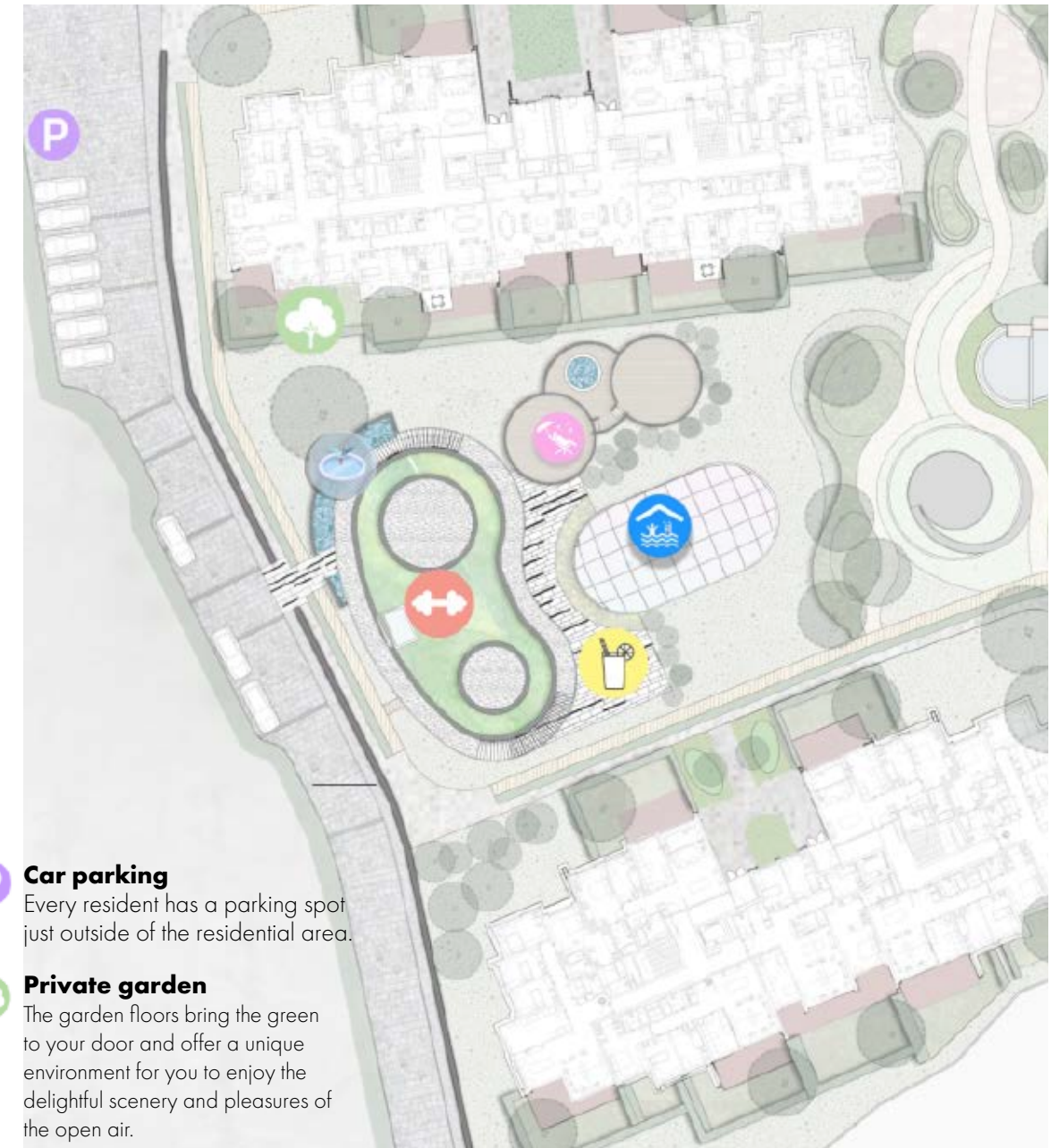


Decorative Pool

Decorative Pools offer a unique view and sense of beauty to your environment. They also help birds to drink water and add extra to the nature around it.

MASTER PLAN

Community center



Car parking

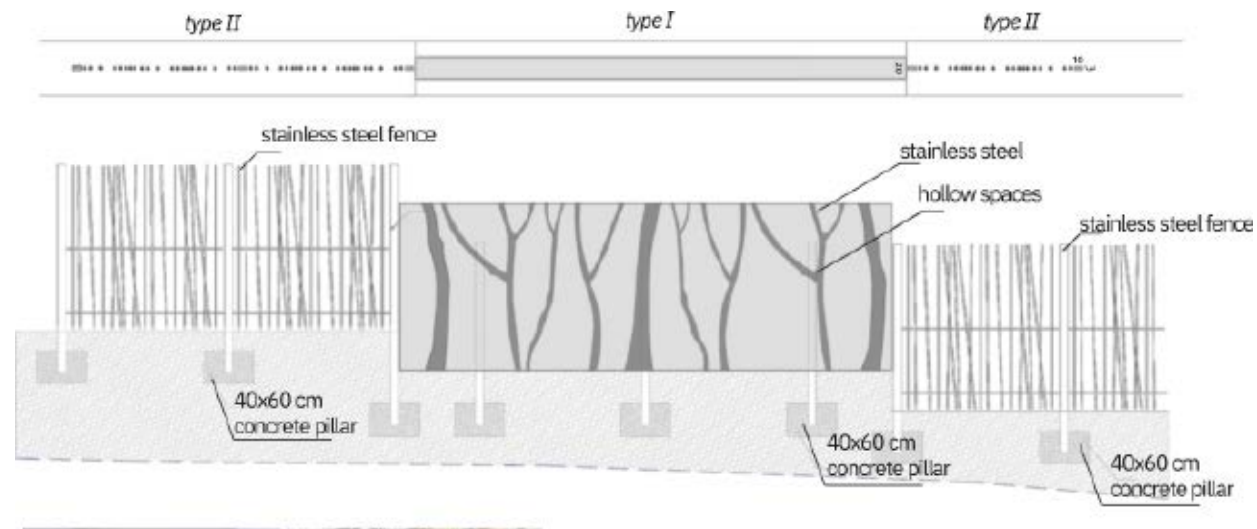
Every resident has a parking spot just outside of the residential area.

Private garden

The garden floors bring the green to your door and offer a unique environment for you to enjoy the delightful scenery and pleasures of the open air.

OUTDOOR RESTING AREA





type I



type II



BOUNDARY WALL CONCEPT DESING

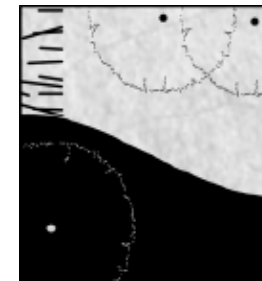
The fences designed with inspriration from nature area aimed to be in perfect fit with with the natural environment of the project.

Type I is used to cover the background area and Type II is used for almost transparent view.



IMPLEMENTATION





06 PRIVATE GARDENS

Selected private gardens designs, based in the Netherlands.

Each project begins with detailed discussions with our customers to understand their vision, preferences and functional requirements. They are followed by an atmospheric impression, concept design, elaboration of the 2D design and, if desired, a 3D visualization.



Year: 2021
 Location: Amsterdam, The Netherlands
 Type: Private garden
 Instructor: Bart Hoes ontwerp bureau voor Tuin en Landschap
 Role: Visual presentation, 3D Modeling



Year: 2022
 Location: Haarlem, The Netherlands
 Type: Private garden
 Instructor: Bart Hoes ontwerp bureau voor Tuin en Landschap
 Role: Visual presentation, 3D Modeling

GAMZE ALPAN

landscape architecture

2023